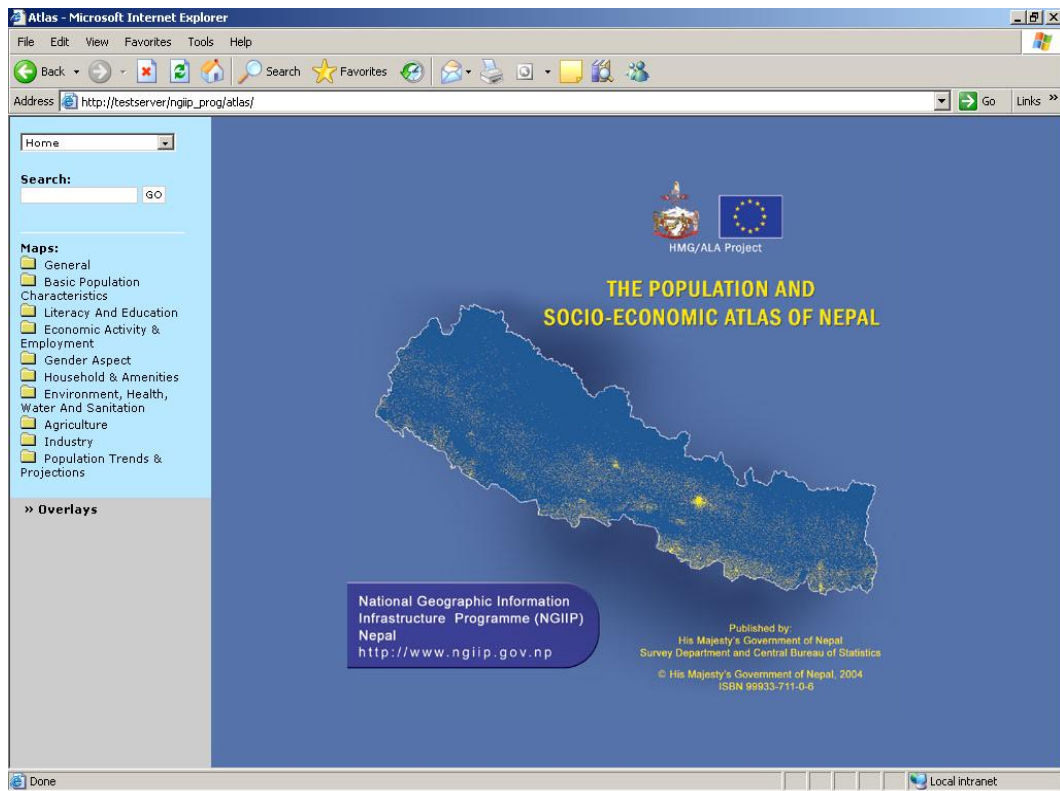


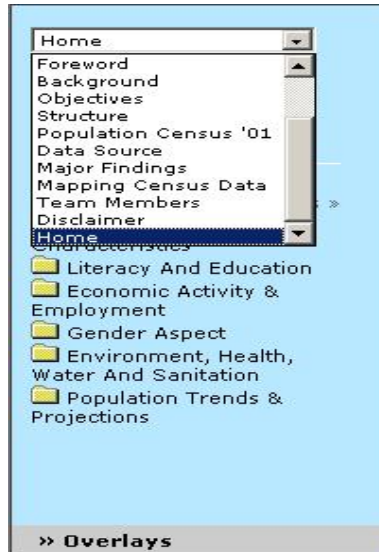
# THE POPULATION AND SOCIO-ECONOMIC ATLAS OF NEPAL

## USERS' MANUAL

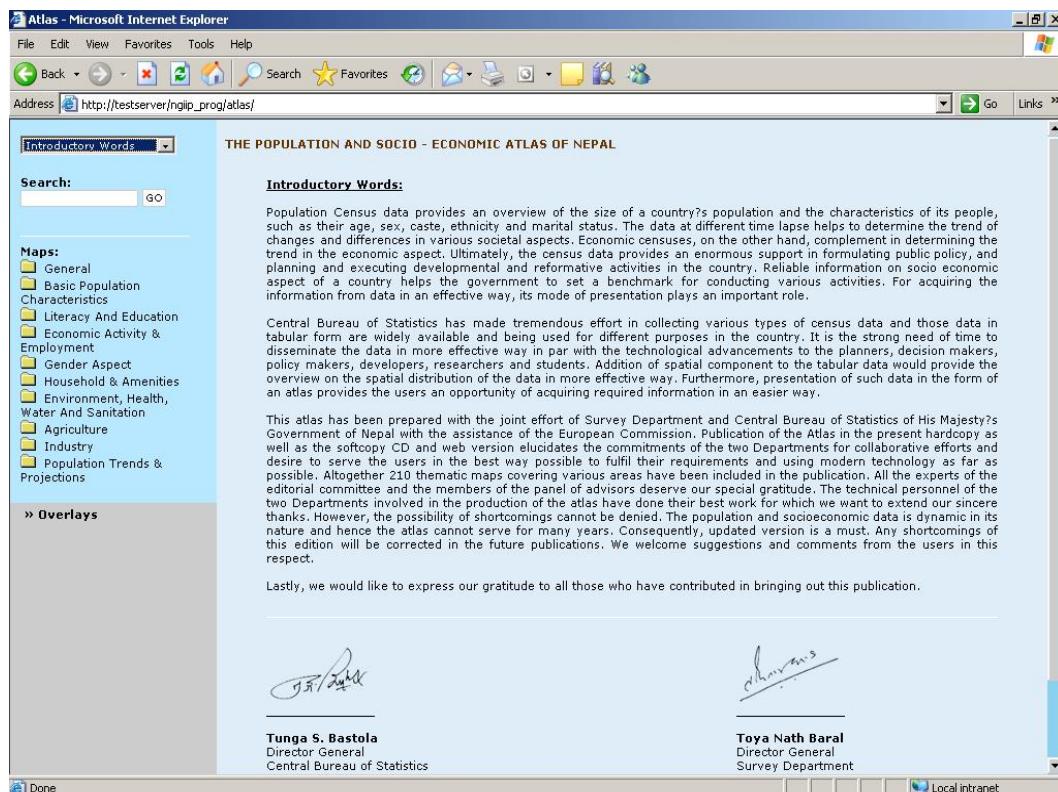


## 1. About the project

i) To view various information about the “The Population and Socio-Economic Atlas of Nepal”, choose the desired option from the drop down box available in the top left of the screen.

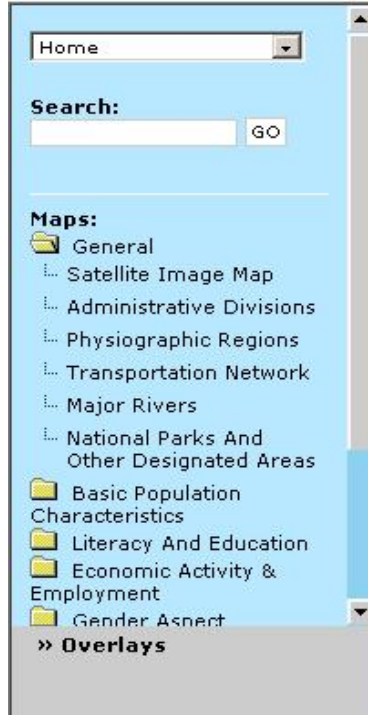


ii) Selecting the options will open the specific document in the main frame.

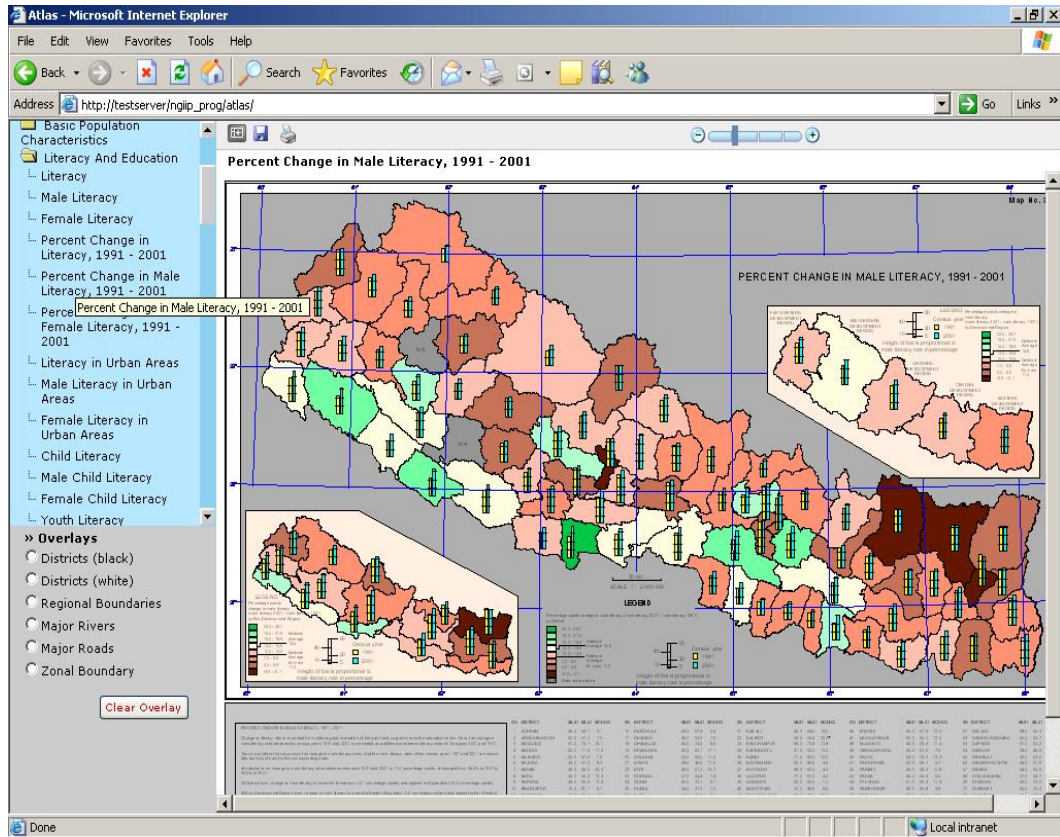


## 2. Viewing the maps

i) An index of the maps is provided on the left hand side of the screen. The maps have been placed in different folders according to their types. Some of the categories of the maps are Basic Population Characteristics, Literacy and Education and so on. To view the maps in any particular category, click on either the folder icon or the category name. Names of all the maps in the category can then be viewed.



ii) To view a particular map, click on the name of the map. The chosen map then gets displayed on the screen.




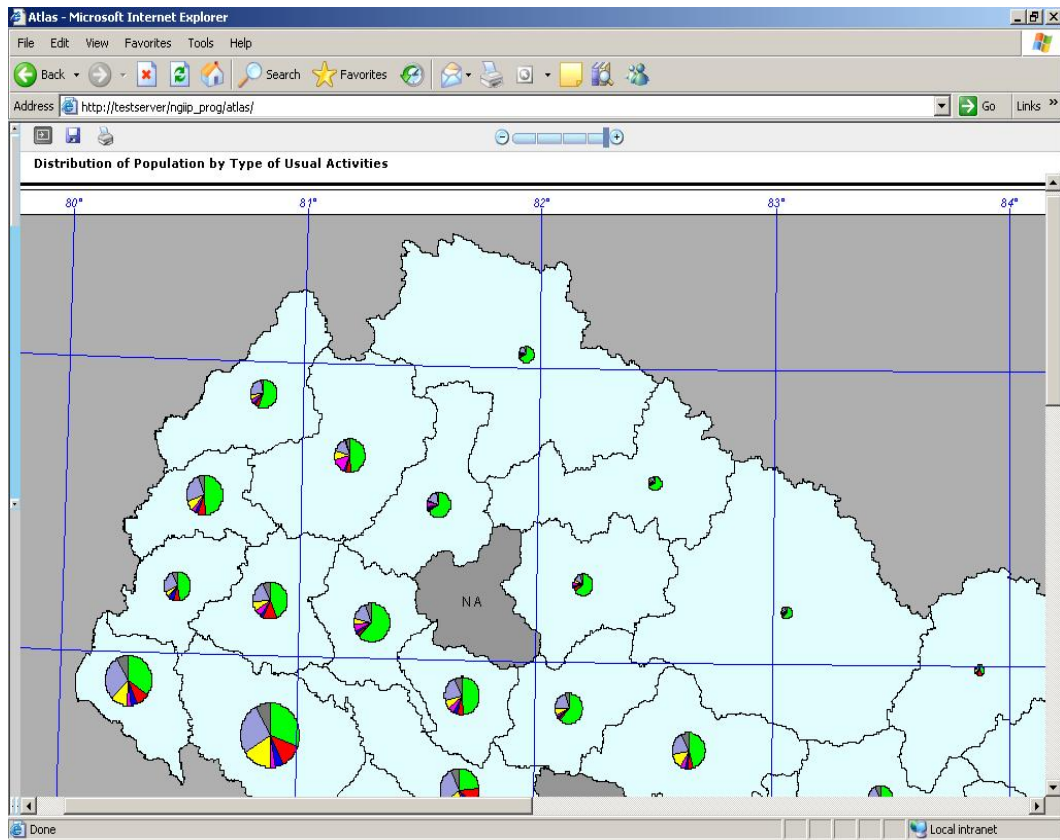
### a. Panning options

This option is available only if Microsoft Internet Explorer 6 is being used to view the map. To move the map using the mouse or to make use of the panning option, move the cursor over the body of the map on the screen and then press the left button on the mouse. Then holding that button, move the mouse in the screen. The map also moves along with the cursor. This option provides similar facilities as using the scroll button on the mouse or moving the scroll bars on the screen.

**b. Expanding and collapsing the frame on the left of the screen.**

This option allows the current map to be viewed full screen.

To collapse the frame on the left of the screen, click on the expand/collapse icon , present on the extreme top left of the main frame.

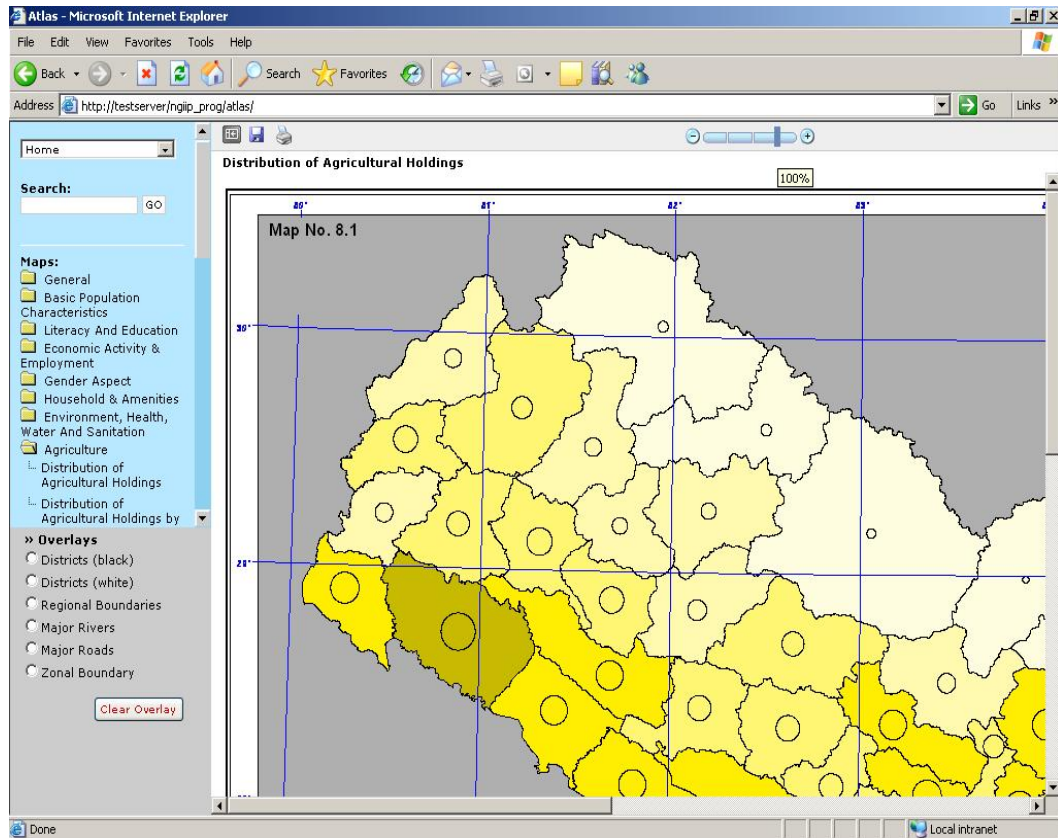


To expand the frame, again click on the same icon.

### 3. Using the zoom options

i) The maps can be viewed at various zoom levels. The map is initially displayed at a zoom level of 50%.

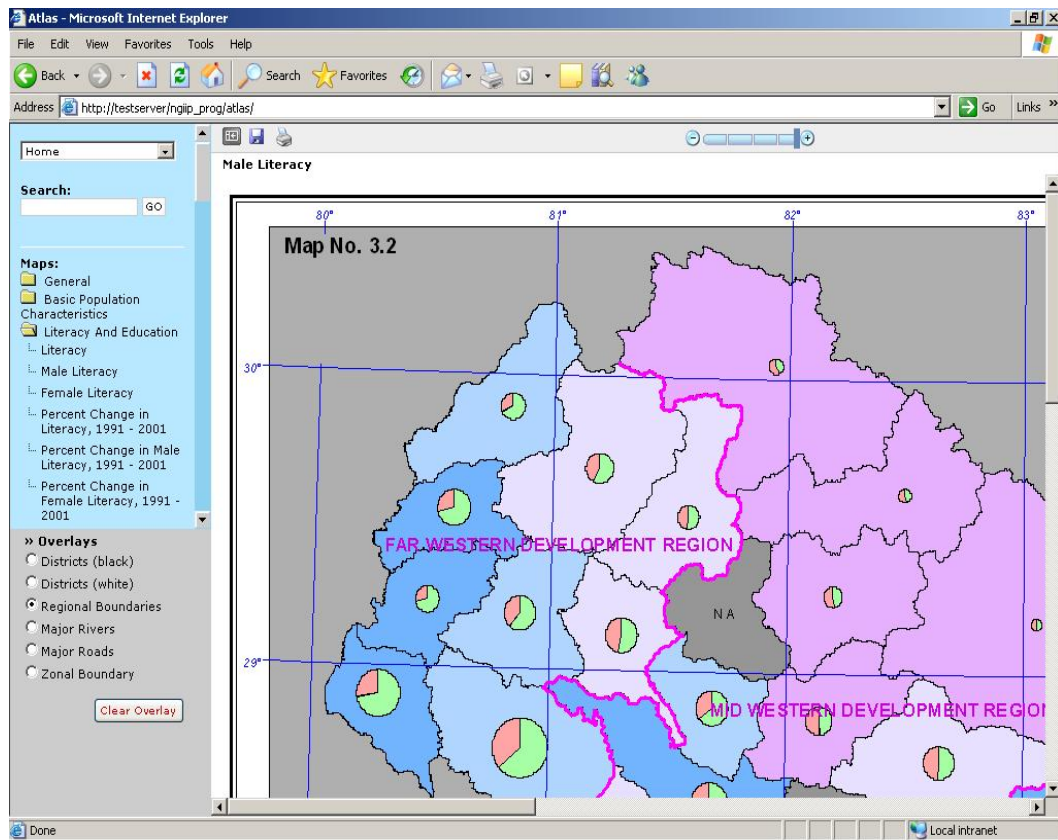
ii) To increase or decrease the zoom levels, you can either click at specific points on the slider or you can drag the slider bar. The zoom level is displayed as a tool tip text.



#### 4. Viewing the overlays


i) If the chosen map has overlay options, they are displayed on the bottom left of the screen. Some of the overlays are Regional Boundaries, Major Rivers, Major Roads and so on.

ii) To overlay a particular theme on the map displayed currently, click on the radio button for a specific theme. The chosen theme will then be seen as an overlap on the currently displayed map.

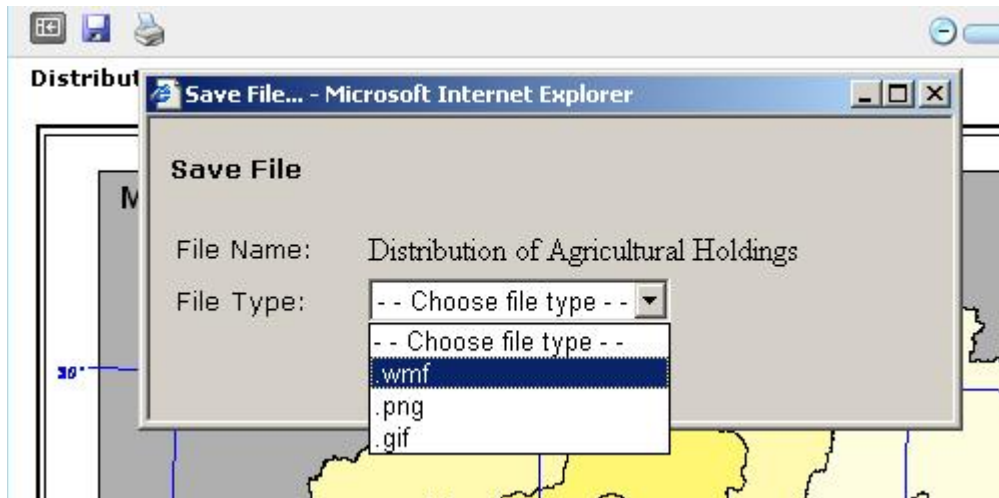


v) To clear the overlay, click on the “Clear Overlay” button right below the list of overlays.

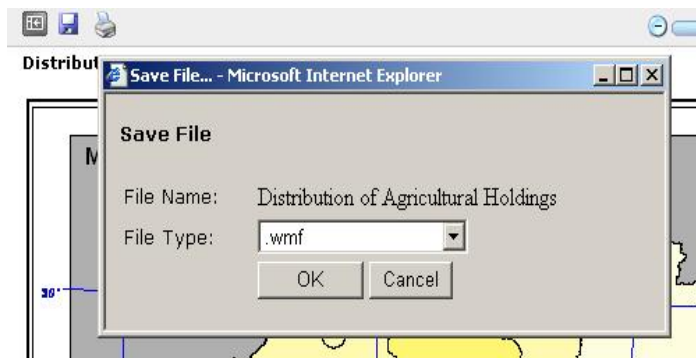
## 5. Using the save options

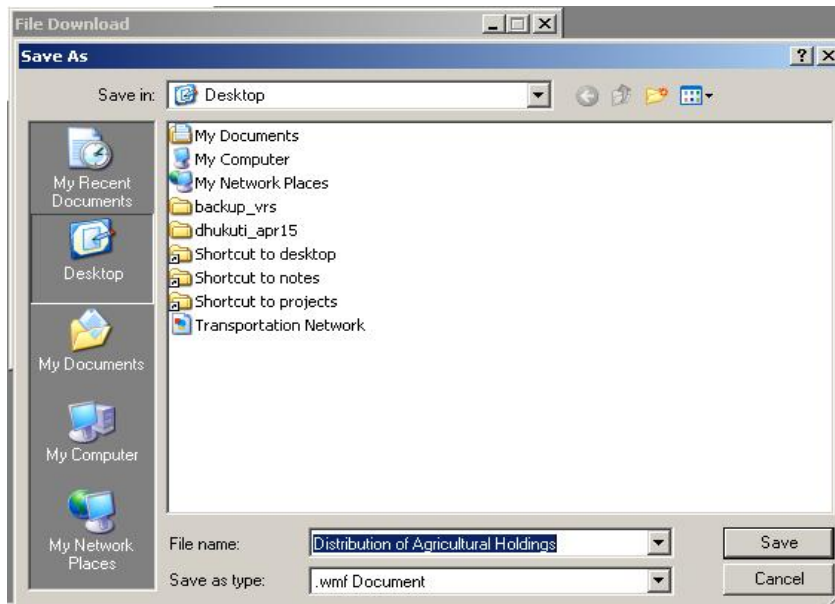
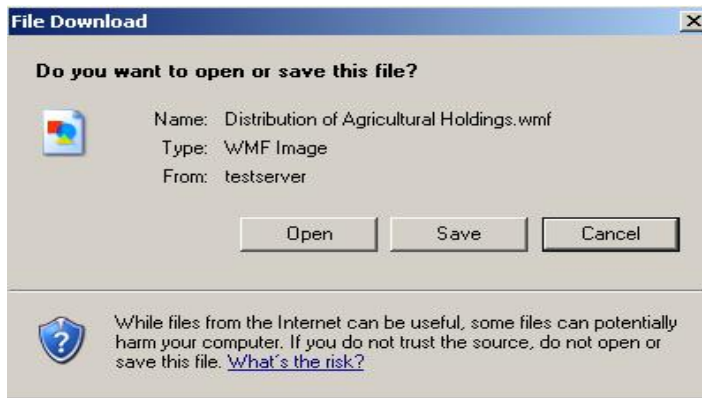
i) To save the currently displayed map, click on the save icon . The save icon is present on the left of the screen on the main frame.

ii) When you click on the save icon, a pop up window will appear on the screen.




iii) When the pop up window appears, choose a file type, either wmf, png or gif. Then click on the “OK” button. A second window appears, and this time click on the “Save” button to save the map in the desired folder/drive.



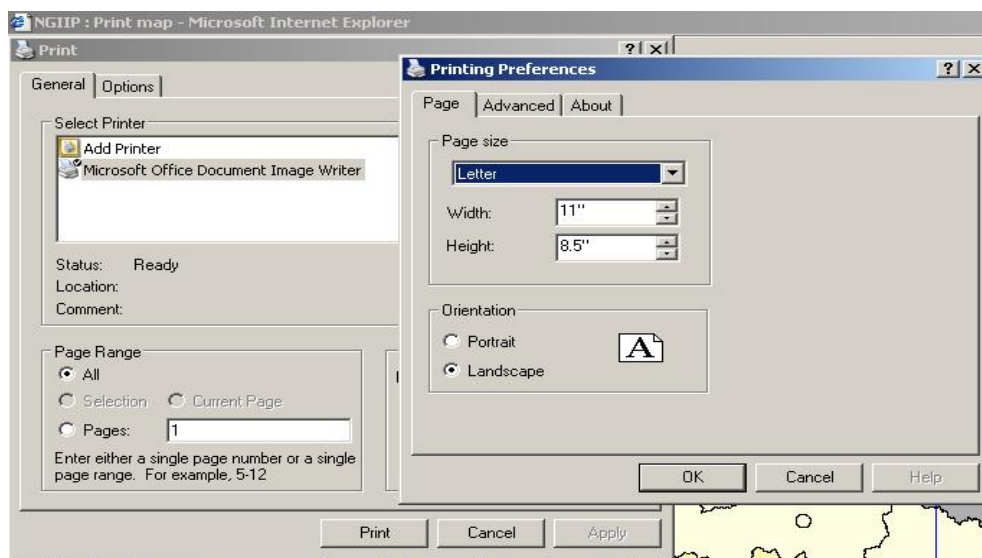
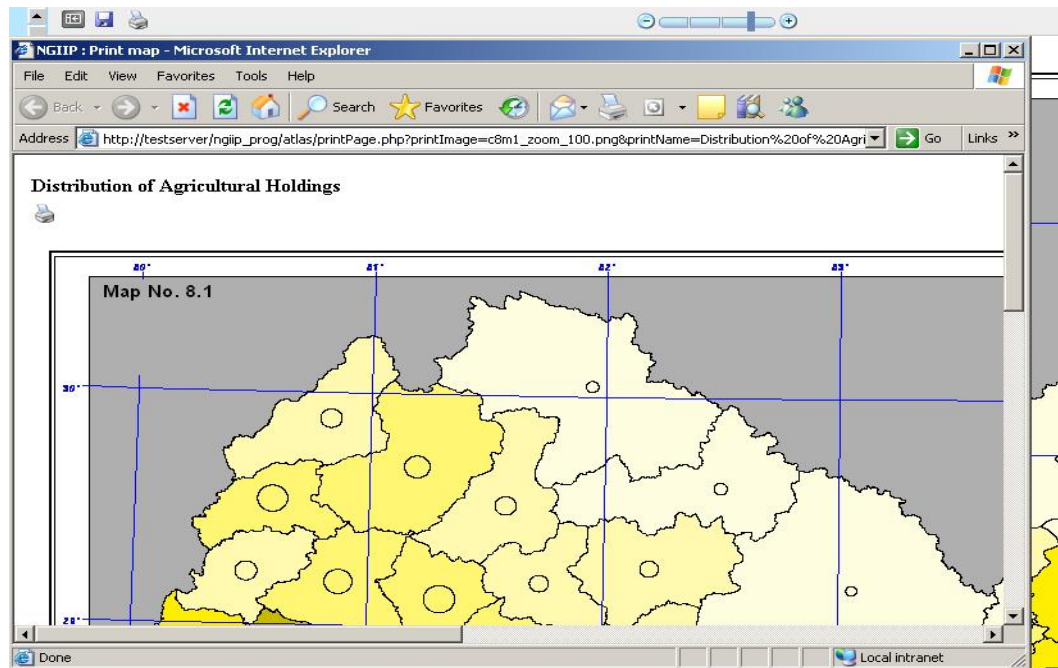


iv) The maps saved to your hard drive can now be viewed using a suitable application such as Windows Picture and Fax Viewer.

## 6. Using the print options

i) To print the currently displayed map, click on the print icon . The print icon is present on the right of the screen on the main frame.

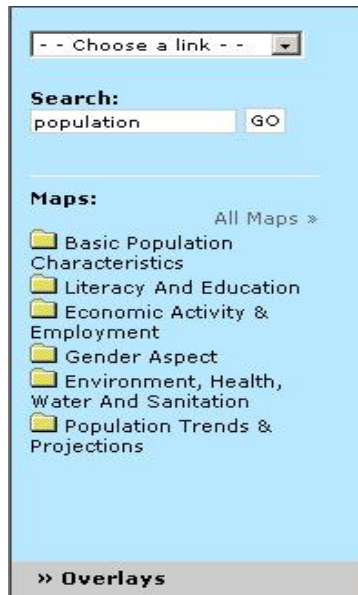
ii) When you click on the print icon, a new window will appear. To print the selected map, click on the print icon in the new window. On clicking on the icon, a pop up window will appear on the screen, select all your preferences in that window and then click on the “Print” button.



*Note: Print the maps in landscape for better results.*

## 7. Using the search option

- i) To search for a specific map, enter the search text in the input box provided in the top left frame.
- ii) After entering a search text, press the “Enter” key or click on the “GO” button.



- iii) If a match is found, the maps will be displayed along with the categories. Follow the same process as before for viewing the maps.
- iv) If no matches are found, a message will be displayed. In this case, check for possible errors in the search text you previously entered and search again.
- v) To view the complete list, click on the “All Maps” link.